

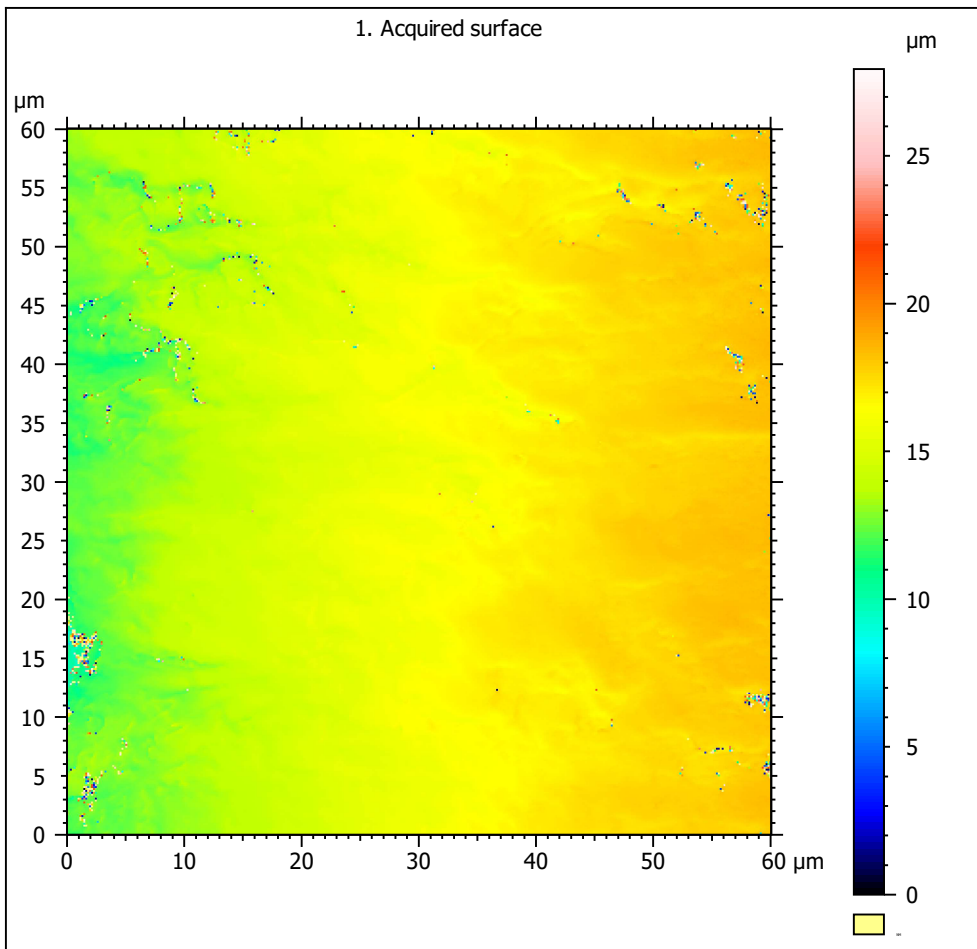
## SSFA comparison

Template to process all surfaces acquired with the Nanofocus  $\mu$ surf Custom with the 100x/0.80 objective.

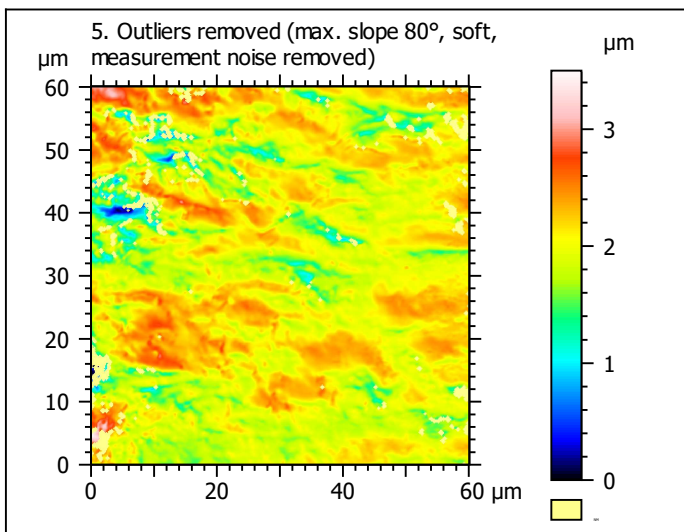
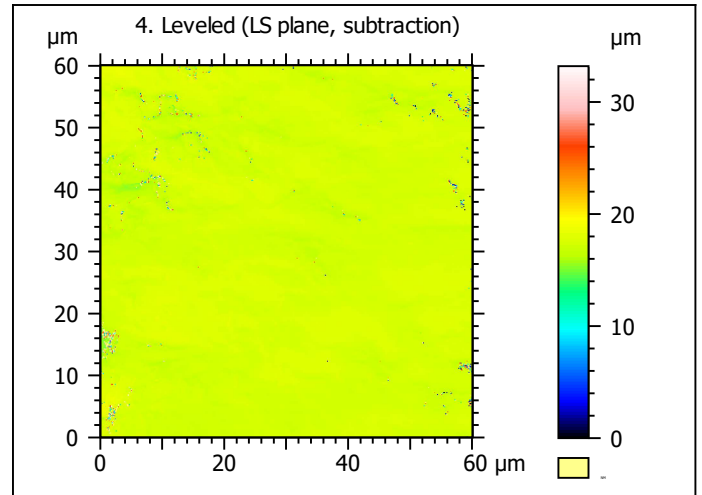
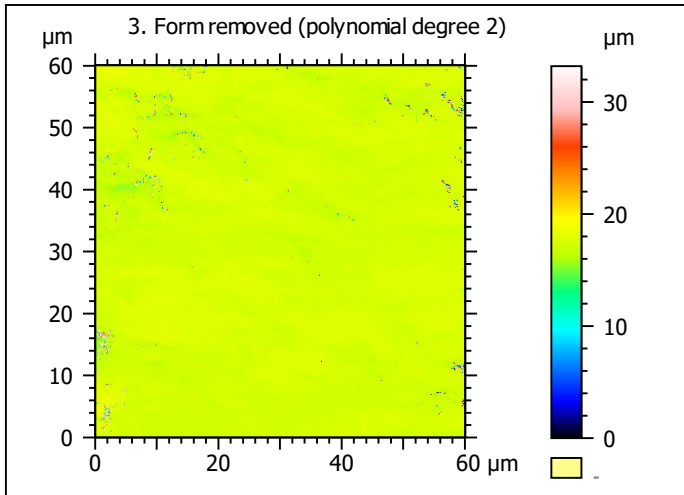
### A. Processing

#### Identity card

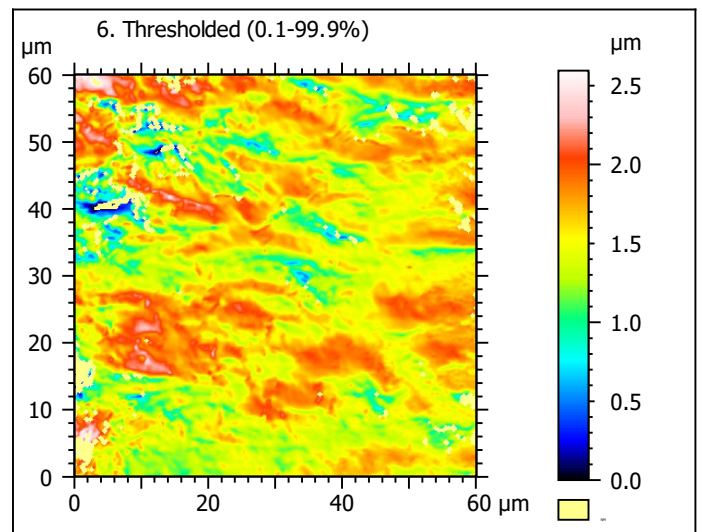
|                  |   |        |  |
|------------------|---|--------|--|
| Name:            | capor_2CC5R1_txP4_#1_1_100xL_2  |        |  |
| File path:       | D:\Data\3Ddata\SSFA\GuineaPigs\Original surfaces\capor_2CC5R1_txP4_#1_1_100xL_2.nms |        |  |
| Studiable type:  | Surface   |        |  |
| Axis:            | X   |        |  |
| Length:          | 60.06   | µm     |  |
| Size:            | 370   | points |  |
| Spacing:         | 0.1628  | µm     |  |
| Axis:            | Y   |        |  |
| Length:          | 60.06   | µm     |  |
| Size:            | 370   | points |  |
| Spacing:         | 0.1628  | µm     |  |
| Axis:            | Z   |        |  |
| Layer type:      | Topography  |        |  |
| Length:          | 27.94   | µm     |  |
| Size:            | 63851   | digits |  |
| Spacing:         | 0.0004375   | µm     |  |
| NM-points ratio: | 0.1833 % (251 Pts)  |        |  |



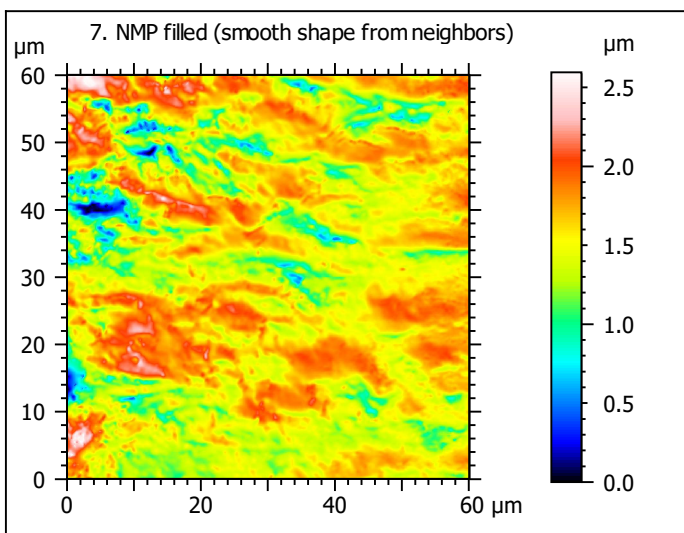
*Note that the surfaces have been preprocessed (mirrored in z and cut to 60x60  $\mu$ m) according to Winkler et al. (2019), PNAS 116: 1325-1330.*



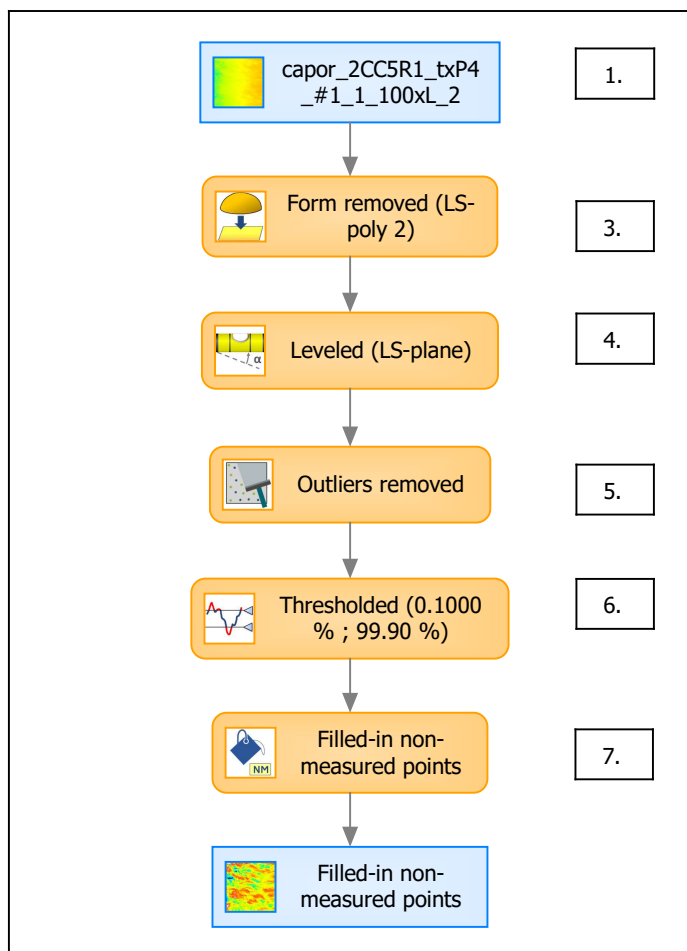
| Identity card    |  |
|------------------|--|
| Name:            | capor_2CC5R1_txP4_...e) > Outliers removed |
| Axis:            | Z  |
| NM-points ratio: | 4.012 % (5493 Pts)                         |



| Identity card    |  |
|------------------|--|
| Name:            | capor_2CC5R1_txP4_...0.1000 % ; 99.90 %) |
| Axis:            | Z  |
| NM-points ratio: | 4.204 % (5755 Pts)                       |



## B. Summary



### Identity card

|                 |  |        |  |
|-----------------|--|--------|--|
| Name:           | capor_2CC5R1_txP4_#1_1_100xL_2 > Form removed (LS-poly 2...resholded (0.1000 % ; 99.90 % ) > Filled-in non-measured points |        |  |
| Studiable type: | Surface  |        |  |
| <b>Axis:</b>    | <b>X</b>   |        |  |
| Length:         | 60.06  | μm     |  |
| Size:           | 370  | points |  |
| Spacing:        | 0.1628   | μm     |  |
| <b>Axis:</b>    | <b>Y</b>   |        |  |
| Length:         | 60.06  | μm     |  |
| Size:           | 370  | points |  |
| Spacing:        | 0.1628   | μm     |  |
| <b>Axis:</b>    | <b>Z</b>   |        |  |
| Layer type:     | Topography   |        |  |
| Length:         | 2.595  | μm     |  |
| Size:           | 5932   | digits |  |
| Spacing:        | 0.0004375  | μm     |  |

